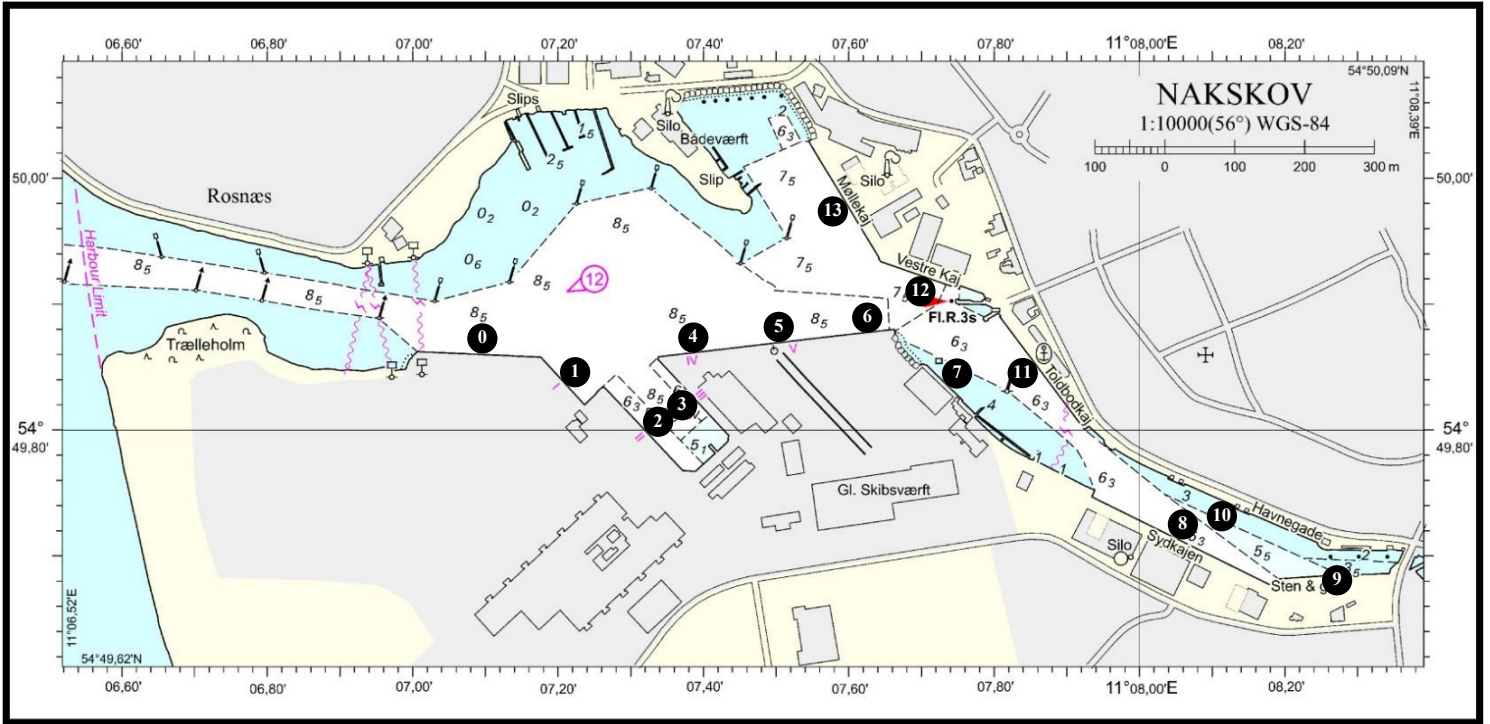


# Kaj data Nakskov Havn



## Nakskov Havn

Berth Number	Berth length (m)	Water depth (m)	Berth width (m)	Berth area in m <sup>2</sup>	Surface	Max Load (tonnes/m <sup>2</sup> )	IMO Number	Remarks
0	127	8,5	30		Coloc	20		Heavy lift quay
0	2 x 30	8,5	30	40.000	Gravel	5	DKNAK0038	Gravel paved area adjacent to heavy lift area
1	100	8,5	20		Coloc/Gravel	2		Good Storage area
ro-ro berth	40	8,5	250		Coloc	2	DKNAK0034	Mooring at Berth 1
2	170	6,3	40	7.370	Coloc	2		Good Storage area
3	150	6,3	15	2.250	Asphalt	2		Bulk
4	100	8,5	35	1.800	Concrete/Asphalt	2	DKNAK0001	Reinforced heavy duty concrete
5	150	8,5	220		Coloc	5		100 ton crane
6	100	8,5	220	40.000	Coloc/gravel	20		Heavy lift quay
8	230	6,3	20	6.000	Asphalt	5	DKNAK0007	Bulk and molasses
9	70	5	2	-	-	-	-	Recreation
10	170	3,5	3	-	-	-	-	Yachts
11	170	6,3	40	6.800	Asphalt	2	DKNAK0002	Reserve Berth
12	120	7,5	40	4.800	Asphalt	2		Bulk
13	200	7,5	30	6.000	Asphalt	2	DKNAK0003	Bulk