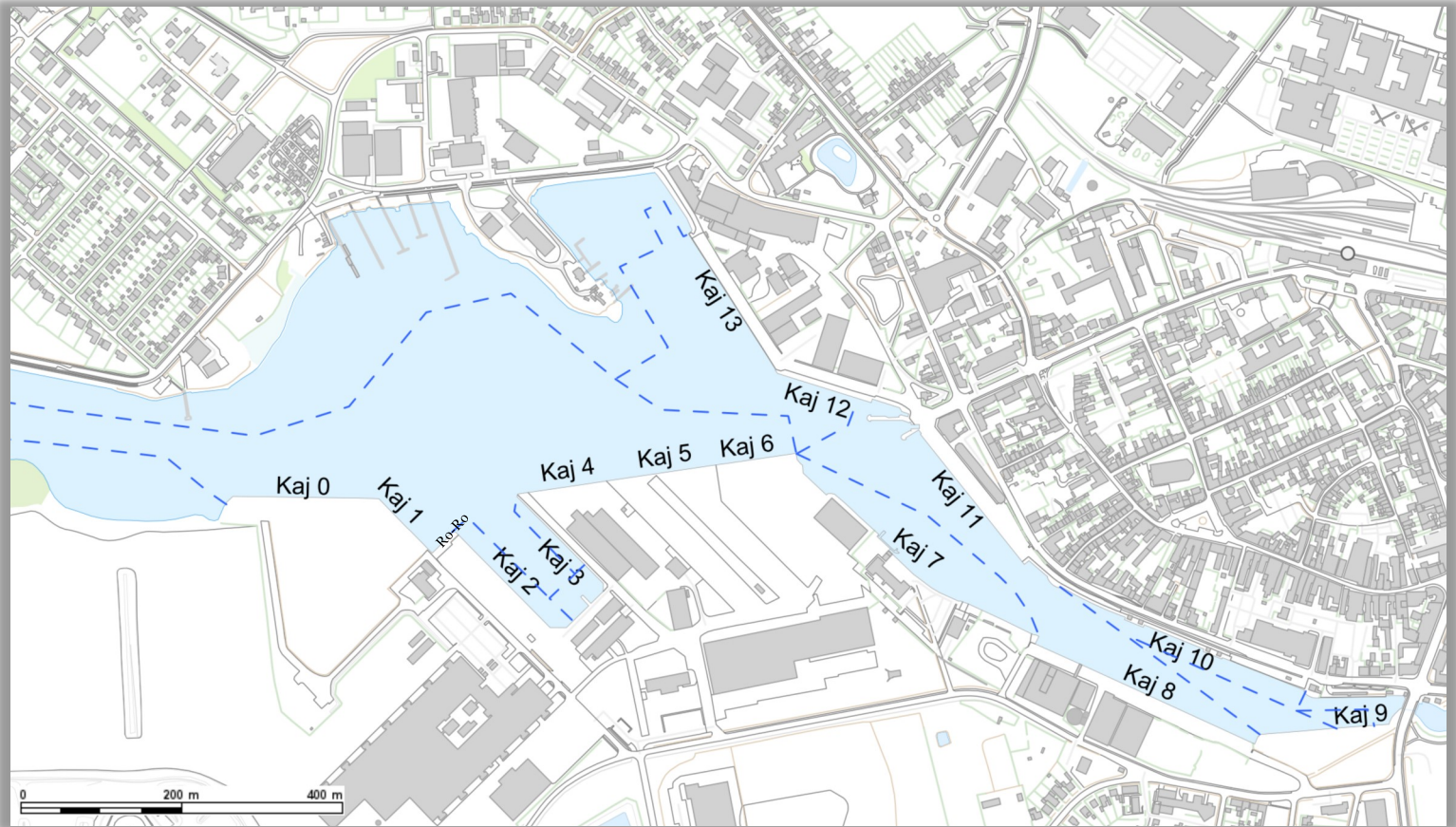


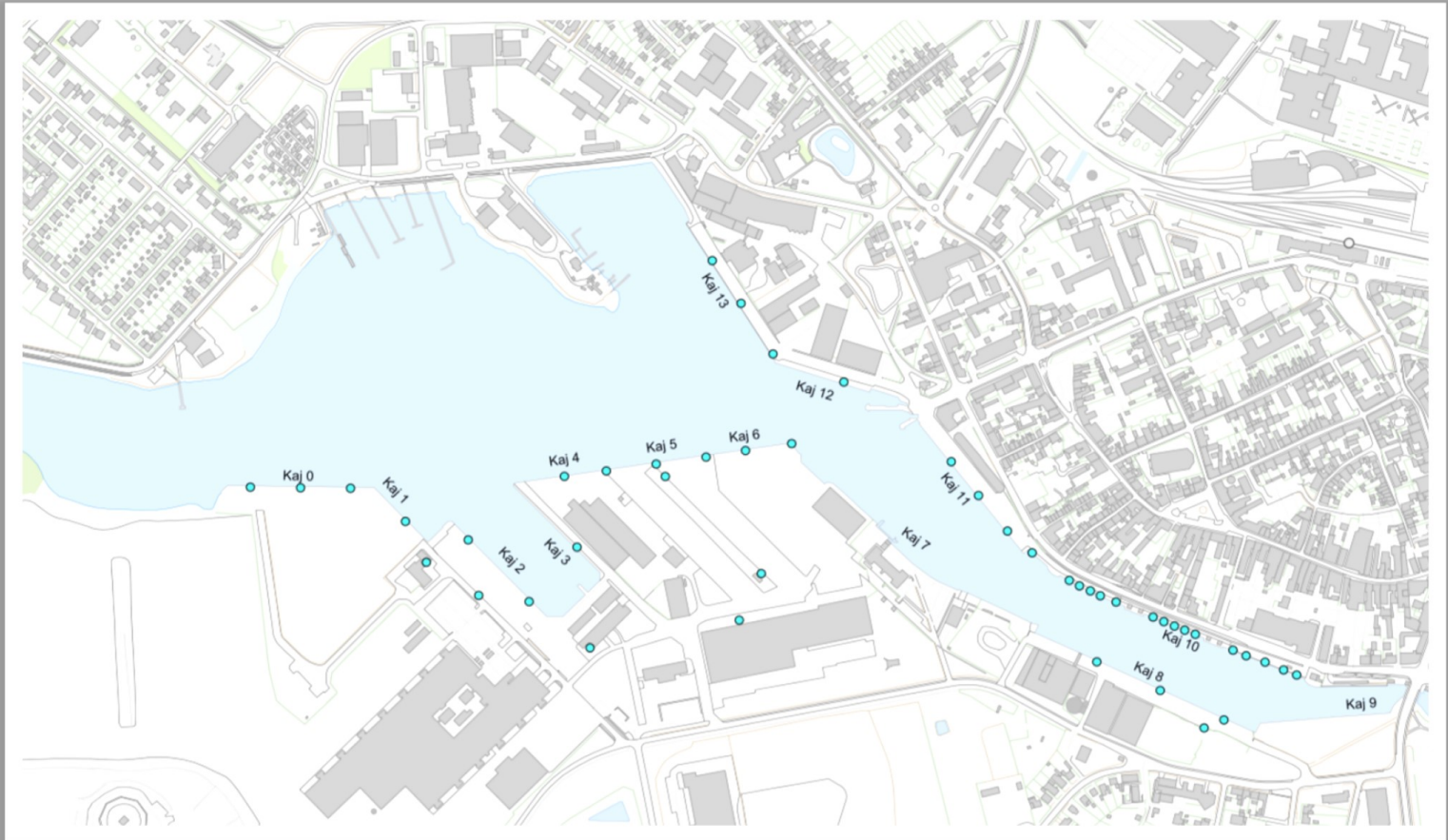
Quay data Nakskov Havn



Berth Number	Berth length (m)	Water depth (m)	Berth width (m)	Berth area in m ²	Surface	Max Load (tonnes/m ²)	IMO Number	Remarks
0	115	8,5	30		Coloc	20		Heavy lift quay
0	2 x 30	8,5	30	40.000	Gravel	5		Adjacent to heavylift area
1	100	8,5	20		Coloc/Gravel	2	DKNAK0034	Good Storage area
ro-ro berth	100	8,5	40	7.370	Coloc	2		Mooring at Berth 1 - Landing area berth 2
2	170	6,3	40		Coloc	2		Good Storage area
3	150	6,3	15	2.250	Asphalt	2		Bulk
4	100	8,5	35	1.800	Concrete/Asphalt	2	DKNAK0001	Reinforced heavy duty concrete
5	150	8,5	220	40.000	Coloc	5		100 ton crane
6	100	8,5	220		Coloc/gravel	20		Heavy lift quay
8	230	6,3	20	6.000	Asphalt	2	DKNAK0007	Bulk and molasses
9	150	2 to 5	8	-	Gravel	-	nil	Recreation
10	170	3,5	3	-	-	-	nil	Yachts
11	170	6,3	40	6.800	Asphalt	2	nil	Reserve Berth promenade
12	120	7,5	40	4.800	Asphalt	2	DKNAK0003	Bulk
13	200	7,5	30	6.000	Asphalt	2		Bulk

Nakskov Havn

Power and fresh water



Berth Number	Power 124 Amp	Power 63 Amp	Power 32 Amp	Power 16 Amp	Fresh water Connections	Fresh water capacity t/hour	Remarks
0	127	8,5	30		Coloc	20	Heavy lift quay
1	0	8,5	20		Coloc/Gravel	2	Good Storage area
2	170	6,3	40		Coloc	2	Good Storage area
3	150	6,3	15	2.250	Asphalt	2	Bulk
4	0	8,5	35	1.800	Concrete/Asphalt	2	Reinforced heavy duty concrete
5	0	8,5	220	40.000	Coloc	5	100 ton crane
6	0	8,5	220		Coloc/gravel	20	Heavy lift quay
8	0	6,3	20	6.000	Asphalt	5	Bulk and molasses
9	0	5,5	2	200	Concrete	-	Stone and gravel
10	0	3	3	1.050	Cobblestone	-	Promenade Berth
9	150	2 to 5	8	-	Gravel	-	Recreation
10	170	3,5	3	-	-	-	Yachts
11	0	6,3	40	6.800	Asphalt	2	Reserve Berth promenade
12	0	7,5	40	4.800	Asphalt	2	Bulk
13	0	7,5	30	6.000	Asphalt	2	Bulk